



MAGGIE SOTTERO<sup>®</sup>

*Spring 2026*

COLLECTION



# MAGGIE SOTTERO®



26MW379A01, IV  
Size 6

Amelie 26MW379A01

# MAGGIE SOTTERO®



## Amelie 26MW379A01

### COLORS

- All Ivory

### HIGHLIGHTS

- Loving satin
- Basque waistline with top stitch detail
- Arched neckline with satin ribbon trim
- Lined with Donella crepe
- Zipper closure with covered buttons trailing to the hem
- Pockets

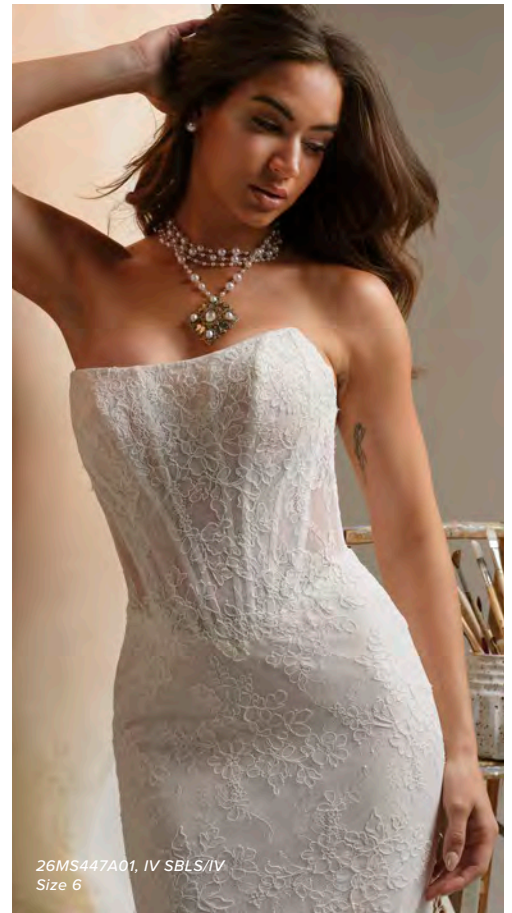
### SIZES: 0-28

### PERSONALIZATION OPTIONS & PRICING

26MW379A01



# MAGGIE SOTTERO®



Ariadne 26MS447A01





Ariadne 26MS447A01

COLORS

- All Ivory gown with Ivory Illusion
- Ivory over Soft Blush gown with Ivory Illusion

HIGHLIGHTS

- Unembellished Chantilly allover lace
- Sheer organza lined bodice with exposed boning detail
- Strapless cat eye neckline
- Deep illusion lace V-back
- Lined with Jenday stretch jersey for comfort
- Zipper closure with Chantilly lace covered buttons trailing to the hem
- Extended illusion lace train

SIZES: 0-28

PERSONALIZATION OPTIONS & PRICING

26MS447A01 (Unlined bodice)
26MS447B01 (Lined front bodice)

ACCESSORIES PRICING

DS026MS447000 (Sleeves)
SW026MS447000 (Shoulder wrap)

# MAGGIE SOTTERO®



26MS400A01, ICE PNK/CH  
Size 6

Ashland 26MS400A01





26MS400B01, IV  
Size 18



26MS400A01, ICE PNK/CH  
Bow: BW026MS400000, ICE PNK  
Size 6



26MS400A01, ICE PNK/CH  
Cap-sleeves: CS026MS400000, ICE PNK  
Size 6

Ashland 26MS400A01

COLORS

- All Ivory gown with Ivory Illusion
- Ice Pink gown with Champagne Illusion

HIGHLIGHTS

- Elin stretch Mikado
- Sheer organza lined bodice with Chantilly lace and exposed boning detail
- Strapless V-neckline
- Lined with Kahili recycled content lining (100% recycled polyester)
- Zipper closure with covered buttons trailing to hem

SIZES: 0-28

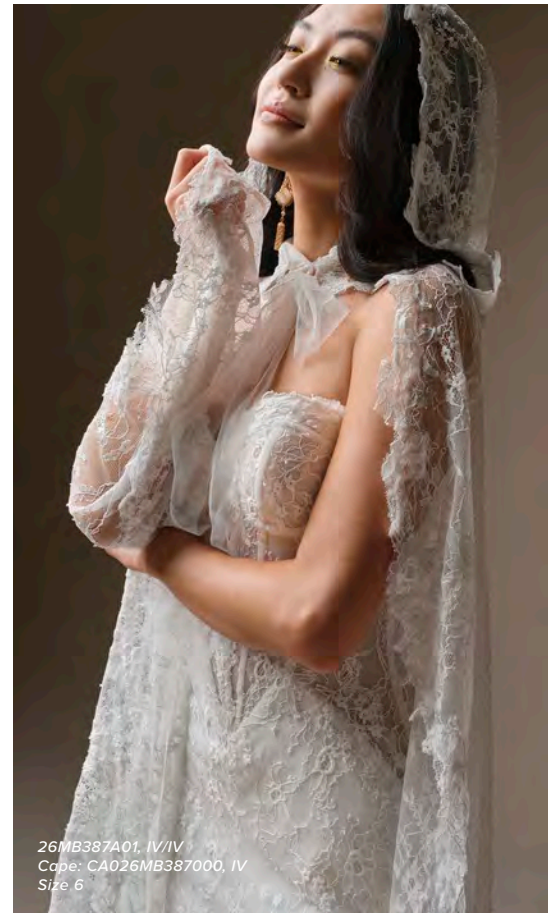
PERSONALIZATION OPTIONS & PRICING

26MS400A01 (Unlined bodice)
26MS400B01 (Fully lined bodice)

ACCESSORIES PRICING

BW026MS400000 (Bow)
CS026MS400000 (Cap-sleeves)

# MAGGIE SOTTERO®



Bellevue 26MB387A01





Bellevue 26MB387A01

COLORS

- All Ivory gown with Ivory Illusion
- Ivory over Blush gown with Ivory Illusion

HIGHLIGHTS

- Unembellished Chantilly lace
- Illusion Chantilly lace bodice with exposed boning detail
- Strapless sweetheart deep illusion neckline
- Lined in Rosario crepe back satin
- Zipper closure with covered buttons trailing to hem
- Extended scallop illusion Chantilly lace train

SIZES: 0-28

PERSONALIZATION OPTIONS & PRICING

26MB387A01 <i>(Unlined bodice, Plain tulle)</i>
26MB387A02 <i>(Unlined bodice, Glitter tulle 3)</i>
26MB387B01 <i>(Lined front bodice, Plain tulle)</i>
26MB387B02 <i>(Lined front bodice, Glitter tulle 3)</i>

ACCESSORIES PRICING

CA026MB387000 <i>(Cape)</i>
DS026MB387000 <i>(Sleeves)</i>

# MAGGIE SOTTERO®



25MB849C01, IV  
Size 6

Dakota Leigh 25MB849C01



# MAGGIE SOTTERO®



## Dakota Leigh 25MB849C01

### COLORS

- All Ivory

### HIGHLIGHTS

- Unembellished allover lace
- Modest square neckline
- Modest square back
- Modest cap-sleeves with detachable sleeve lining
- Lined with Rosario crepe back satin
- Covered buttons and zipper over inner elastic closure
- Extended illusion lace train
- Detachable inner cap-sleeves included

SIZES: 0-28

### SISTER STYLES

- Also available with a strapless sweetheart neckline and illusion bodice (Dakota, 25MB849A01)

### PERSONALIZATION OPTIONS & PRICING

25MB849C01 (Modest)
------------------------

# MAGGIE SOTTERO®



26MS479A11, IV  
Size 6



Emelina 26MS479A01





Emelina 26MS479A01

COLORS

- All Ivory

HIGHLIGHTS

- Cartago satin
- Asymmetrically draped front bodice
- Strapless straight neckline
- Kahili recycled content lining (100% recycled polyester)
- Zipper and inner elastic closure with covered buttons trailing to the hem

SIZES: 0-28

PERSONALIZATION OPTIONS & PRICING

26MS479A01 (Unembellished)
26MS479A11 (3-D flowers)

ACCESSORIES PRICING

SS025MS910000 (Antoinette) (3-D flower strap)
--

# MAGGIE SOTTERO®



26MS468A01, IV SBLS/IV  
Cap-sleeves: CS026MS468000, IV/IV  
Veil: VL026MS468000, IV  
Size 6

Farrah 26MS468A01





Farrah 26MS468A01

COLORS

- All Ivory gown with Ivory Illusion
- Ivory over Soft Blush gown with Ivory Illusion

HIGHLIGHTS

- Sequin lace motifs over Chantilly lace
- Illusion lace bodice with exposed boning detail
- Plunging illusion V-neckline
- Deep illusion lace V-back
- Lined with Kahili recycled content lining (100% recycled polyester)
- Zipper closure with Chantilly lace covered buttons trailing to the hem
- Detachable bodice lining included
- Extended scalloped illusion lace train

SIZES: 0-28

PERSONALIZATION OPTIONS & PRICING

26MS468A01 (Chantilly lace)
26MS468A02 (Glitter tulle 3)

ACCESSORIES PRICING

CS026MS468000 (Cap-sleeves)
DSA26MS468000 (Sleeves, Chantilly lace)
DSB26MS468000 (Sleeves, Plain tulle)
VLO26MS468000 (Cathedral veil)

# MAGGIE SOTTERO®



26MK419A01, IV  
Veil: VLEEEXK002000, IV  
Size 6

Galina 26MK419A01





Galina 26MK419A01

COLORS

- All Ivory

HIGHLIGHTS

- Lyric Mikado
- Curved empire waistband
- Soft square neckline
- V-back
- Lyric Mikado tank straps
- Lined with Kahili recycled content lining (100% recycled polyester)
- Zipper closure with covered buttons trailing to the hem
- Pockets

SIZES: 0-28

PERSONALIZATION OPTIONS & PRICING

26MK419A01 (Sleeveless)
26MK419A11 (Long sleeves)

ACCESSORIES PRICING

VLEEXK002000 (Fingertip veil with blusher)
---

# MAGGIE SOTTERO®



Hudson 26MS412A01





Hudson 26MS412A01

COLORS

- All Ivory

HIGHLIGHTS

- Cartago satin
- Asymmetrically draped front bodice
- Dramatic strapless cat eye neckline
- Soft sweetheart back neckline
- Lined with Kahili recycled content lining (100% recycled polyester)
- Zipper with inner elastic closure and covered buttons trailing to the hem
- Detachable panniers included for customizable hip volume
- Pockets

SIZES: 0-28

PERSONALIZATION OPTIONS & PRICING

26MS412A01
------------

ACCESSORIES PRICING

DS026MS412000 (Sleeves)
VL026MS412000 (Fingertip veil)

# MAGGIE SOTTERO®

FEATURING  
**JERSEY  
LINING**

LIGHTWEIGHT  
AND  
COMFORTABLE

26MB374A01, IV/IV  
Veil: VLDEEXK003000, IV  
Size 6

India 26MB374A01



# MAGGIE SOTTERO®



## India 26MB374A01

### COLORS

- All Ivory gown with Ivory Illusion

### HIGHLIGHTS

- Trento satin
- Beaded and sequin lace motifs on sparkle tulle illusion bodice with basque waist
- Deep illusion cat eye neckline with medallion lace detail
- Beaded spaghetti straps
- Lined in Trujillo stretch jersey for comfort
- Zipper with covered buttons trailing to hem
- Extended illusion lace scalloped train

SIZES: 0-28

### PERSONALIZATION OPTIONS & PRICING

26MB374A01 (Unlined bodice)
--------------------------------

26MB374B01 (Fully lined bodice)
------------------------------------

### ACCESSORIES PRICING

VLDEEXK003000 (Cathedral veil)
-----------------------------------

# MAGGIE SOTTERO®



Jennifer 26MS404A01





Jennifer 26MS404A01

COLORS

- All Ivory gown with Ivory Illusion
- Ivory over Blush gown with Ivory Illusion

HIGHLIGHTS

- Sequined lace motifs over glitter tulle
- Plunging illusion V-neckline
- Sheer organza lined lace back
- Lined with Kahili recycled content lining (100% recycled polyester)
- Covered button over zipper closure

SIZES: 0-28

PERSONALIZATION OPTIONS & PRICING

26MS404A01 <i>(Plunge, Glitter tulle 3)</i>
26MS404A02 <i>(Plunge, Chic organza)</i>
26MS404B01 <i>(No plunge, Glitter tulle 3)</i>
26MS404B02 <i>(No plunge, Chic organza)</i>

ACCESSORIES PRICING

CS022MC913000 (Lennon) <i>(Cap-sleeves)</i>
VL022MC913000 (Lennon) <i>(Veil)</i>

# MAGGIE SOTTERO®



26MB385A01, IV BLS/IV  
Size 6

Kitaro 26MB385A01





Kitaro 26MB385A01

COLORS

- All Ivory gown with Ivory Illusion
- Ivory over Blush gown with Ivory Illusion

HIGHLIGHTS

- Chantilly lace
- Pearl accented 3-D flowers on illusion bodice with basque waistline and exposed boning detail
- Strapless off-the-shoulder neckline with scalloped eyelash lace
- Illusion Chantilly lace back accented 3-D flowers
- Off-the-shoulder long sleeves with pearl accented 3-D flowers
- Lined with Rosario crepe back satin
- Covered button over zipper closure
- Extended illusion Chantilly lace train

SIZES: 0-28

PERSONALIZATION OPTIONS & PRICING

26MB385A01 (Unlined bodice, Sleeves)
26MB385A11 (Unlined bodice, Sleeveless)
26MB385B01 (Lined front bodice, Sleeves)
26MB385B11 (Lined front bodice, Sleeveless)

ACCESSORIES PRICING

DS026MB385000 (Sleeves)
----------------------------

# MAGGIE SOTTERO®

FEATURING  
**JERSEY  
LINING**

LIGHTWEIGHT  
AND  
COMFORTABLE

26MK428A01, IV BLS/IV  
Sleeves: DS026MK428000, IV/IV  
Train: DT026MK428000, IV  
Size 6

Laurie 26MK428A01





Laurie 26MK428A01

COLORS

- Ivory gown with Ivory Illusion

HIGHLIGHTS

- Beaded and sequined lace accented with 3-D flowers over Chantilly lace
- Illusion beaded and sequined lace bodice
- Plunging illusion square neckline
- Scoop back neckline
- Detachable beaded and sequined spaghetti straps included
- Lined in Virtue stretch jersey for comfort
- Covered button over zipper closure
- Illusion lace hip dips
- Extended illusion lace train

SIZES: 0-28

PERSONALIZATION OPTIONS & PRICING

26MK428A01 (Unlined bodice, Plunge)
26MK428A11 (Unlined bodice, No plunge)
26MK428B01 (Lined front bodice, Plunge)
26MK428B11 (Lined front bodice, No plunge)

ACCESSORIES PRICING

DS026MK428000 (Sleeves)
DT026MK428000 (Train)
OS026MK428000 (Overskirt)

# MAGGIE SOTTERO®



26MZ448A01, IV/LT ND  
Size 6

Lawrence 26MZ448A01





Lawrence 26MZ448A01

COLORS

- Ivory gown with Light Nude Illusion
- Ivory gown with Medium Nude Illusion

HIGHLIGHTS

- Kheda satin
- Batteau neckline
- Deep V-back
- Kheda satin tank straps
- Lined with Kahili recycled content lining (100% recycled polyester)
- Zipper closure with covered buttons trailing to the hem
- Pockets

SIZES: 0-28

PERSONALIZATION OPTIONS & PRICING

26MZ448A01 (Sleeveless)
26MZ448A11 (Long sleeves)

ACCESSORIES PRICING

VL026MK448000 (Cathedral veil)
-----------------------------------

# MAGGIE SOTTERO®



26MS402A01, IV/IV  
Sleeves: DS026MS402000, IV/IV  
Size 6

London 26MS402A01





London 26MS402A01

COLORS

- All Ivory gown with Ivory Illusion

HIGHLIGHTS

- Cartago satin
- Sheer organza lined bodice accented with beaded lace motifs
- Strapless soft sweetheart neckline
- Detachable 1/2" beaded spaghetti straps included and sold separately
- Lined with Kahili recycled content lining (100% recycled polyester)
- Zipper closure with covered buttons trailing to the hem
- Illusion lace tiered peplums accent the hips
- Detachable full bodice lining included
- Pockets

SIZES: 0-28

PERSONALIZATION OPTIONS & PRICING

26MS402A01 (Peplum)
26MS402A11 (No peplum)

ACCESSORIES PRICING

CS026MS402000 (Cap-sleeves)
DS026MS402000 (Sleeves)
SS026MS402000 (Shoulder straps)

# MAGGIE SOTTERO®



26MB463A01, IV BLS/LT ND  
Size 6

LUCCA 26MB463A01





26MB463A01, IV BLS/LT ND  
Sleeves: DS026MB463000, IV/IV  
Size 6



26MB463A01, IV BLS/LT ND  
Size 6

Lucca 26MB463A01

COLORS

- All Ivory gown with Ivory Illusion
- Ivory over Blush gown with Light Nude Illusion
- Ivory over Blush gown with Medium Nude Illusion

HIGHLIGHTS

- Beaded and sequin lace motifs over Chantilly lace and glitter tulle
- Illusion bodice with beaded and sequin lace motifs and exposed boning detail
- Deep illusion sweetheart neckline with lace medallion detail
- Lined in Rosario crepe back satin
- Covered buttons over zipper closure
- Extended scalloped illusion lace train

SIZES: 0-28

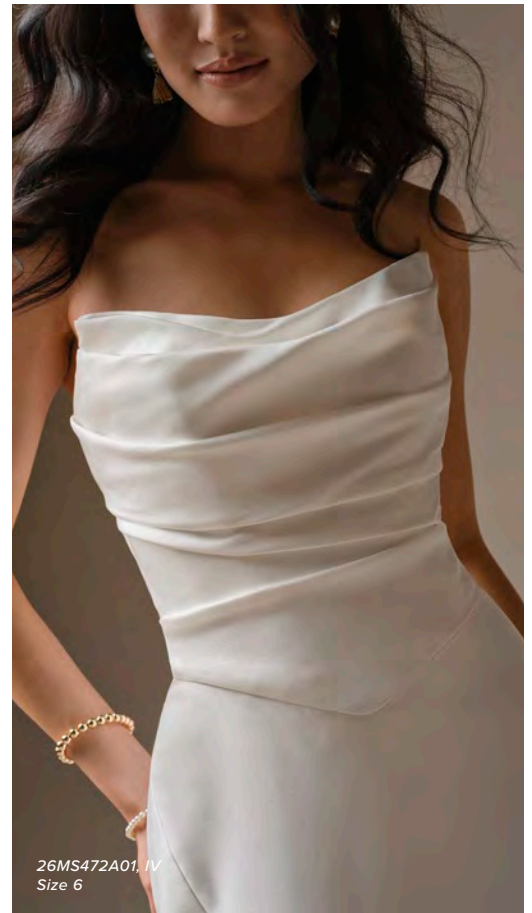
PERSONALIZATION OPTIONS & PRICING

26MB463A01 (Unlined bodice)
26MB463B01 (Lined front bodice)

ACCESSORIES PRICING

DS026MB463000 (Sleeves)
----------------------------

# MAGGIE SOTTERO®



Maureen Lane 26MS472A01





Maureen Lane 26MS472A01

COLORS

- All White
- All Ivory
- All Black

HIGHLIGHTS

- Cartago satin
- Asymmetrical rushed bodice
- Cat eye neckline
- Kahili recycled content lining (100% recycled polyester)
- Zipper and inner elastic closure with covered buttons trailing to the hem

SIZES: 0-28

SISTER STYLES

- Available with a Cartago satin ballgown skirt (Maureen, 25MS873A01)

PERSONALIZATION OPTIONS & PRICING

26MS472A01

ACCESSORIES PRICING

DT026MS472000  
(Train)

# MAGGIE SOTTERO®



26MZ382A01, IV  
Size 6

Melinda 26MZ382A01



# MAGGIE SOTTERO®



## Melinda 26MZ382A01

### COLORS

- All Ivory

### HIGHLIGHTS

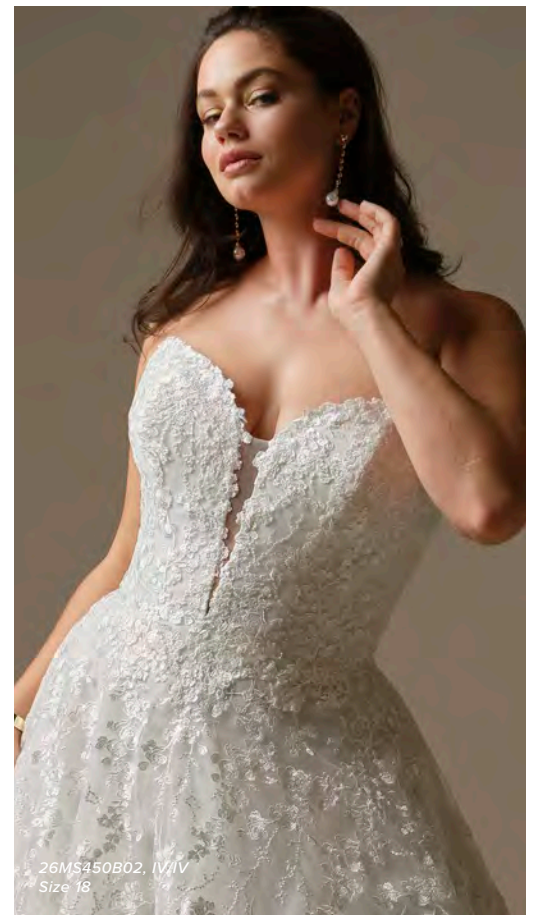
- Loving satin
- Modest cowl neckline
- Soft V-back
- Modest fitted long sleeves with pearl button closure
- Lined with Brisa stretch jersey for comfort
- Zipper closure with pearl buttons trailing to the hem

SIZES: 0-28

### PERSONALIZATION OPTIONS & PRICING

26MZ382A01  
(Modest)

# MAGGIE SOTTERO®



Memphis 26MS450A01





Memphis 26MS450A01

COLORS

- All Ivory gown with Ivory Illusion
- Ivory over Soft Blush gown with Ivory Illusion

HIGHLIGHTS

- Sequined allover lace over glitter tulle
- Sheer organza lined bodice with exposed boning detail
- Plunging illusion V-neckline
- Deep sheer lace V-back
- Lined with Kahili recycled content lining (100% recycled polyester)
- Covered button over zipper closure
- Tulle pockets
- Horsehair hem

SIZES: 0-28

PERSONALIZATION OPTIONS & PRICING

26MS450A01 (Unlined bodice, Glitter tulle)
26MS450A02 (Unlined bodice, Plain tulle)
26MS450B01 (Fully lined bodice, Glitter tulle)
26MS450B02 (Fully lined bodice, Plain tulle)

ACCESSORIES PRICING

CS026MS450000 (Cap-sleeves)
VL026MA450000 (Cathedral veil)

# MAGGIE SOTTERO®



26MB391A01, IV BLS/LT ND  
Size 6

Natalie Marie 26MB391A01





Natalie Marie 26MB391A01

COLORS

- All Ivory gown with Ivory Illusion
- Ivory over Blush gown with Light Nude Illusion
- Ivory over Blush gown with Medium Nude Illusion

HIGHLIGHTS

- Allover unembellished lace
- Sheer bodice with side cut-outs
- Square neckline
- Unembellished lace spaghetti straps
- Lined with Rosario crepe back satin
- Covered button over zipper closure
- Horsehair hem
- Illusion lace train

SIZES: 0-28

SISTER STYLES

- Also available with a deep illusion strapless sweetheart neckline (Natalie, 25MB924A01)

PERSONALIZATION OPTIONS & PRICING

26MB391A01 (Unlined bodice)
26MB391B01 (Fully lined bodice)

# MAGGIE SOTTERO®



FEATURING  
**JERSEY  
LINING**  
—  
LIGHTWEIGHT  
AND  
COMFORTABLE

26MS380A01, IV/IV  
Size 6

Noelle 26MS380A01





Noelle 26MS380A01

COLORS

- All Ivory gown with Ivory Illusion

HIGHLIGHTS

- Eva crepe
- Sheer organza lined front bodice accented with Chantilly lace and beaded lace motifs
- Plunging illusion V-neckline
- Plunging illusion lace V-back
- Beaded spaghetti straps
- Lined with Jenday stretch jersey for comfort
- Covered button over zipper closure
- Extended scalloped illusion lace train accented with sparkle tulle

SIZES: 0-28

PERSONALIZATION OPTIONS & PRICING

26MS380A01 (Unlined bodice)
26MS380B01 (Lined front bodice)

# MAGGIE SOTTERO®



26MS474A01, IV  
Size 6

Pasadena 26MS474A01





Pasadena 26MS474A01

COLORS

- All Ivory

HIGHLIGHTS

- Cartago satin
- Asymmetrically draped bodice with an exaggerated basque waistline
- Strapless sweetheart neckline with bead and pearl accent
- Soft sweetheart back neckline
- Kahili recycled content lining (100% recycled polyester)
- Zipper and inner elastic closure with covered buttons trailing to the hem
- Pockets

SIZES: 0-28

PERSONALIZATION OPTIONS & PRICING

26MS474A01 (Embellished)
26MS474A11 (Unembellished)

ACCESSORIES PRICING

CS025MS890000 (Melissa) (Cap-sleeves)
--

# MAGGIE SOTTERO®



26MS370A01, IV CH/CH  
Size 6

Raquel 26MS370A01





## Raquel 26MS370A01

### COLORS

- Ivory gown with Ivory Illusion
- Ivory over Champagne gown with Champagne Illusion

### HIGHLIGHTS

- Unembellished Chantilly lace
- Sheer organza lined bodice with exposed boning detail
- Strapless cat eye neckline
- Lined with Kahili recycled content lining (100% recycled polyester)
- Zipper closure with covered buttons trailing to the hem
- Detachable full bodice lining included
- Pockets
- Extended sheer Chantilly lace train

SIZES: 0-28

### PERSONALIZATION OPTIONS & PRICING

26MS370A01 (Unlined bodice, Unembellished)
26MS370A02 (Unlined bodice, Embellished)
26MS370B01 (Fully lined bodice, Unembellished)
26MS370B02 (Fully lined bodice, Embellished)

### ACCESSORIES PRICING

CSA26MS370000 (Unembellished cap-sleeves)
CSB26MS370000 (Embellished cap-sleeves)

# MAGGIE SOTTERO®



26MS462A01, IV  
Choker: CH026MS4620000, IV/IV  
Train: DT026MS462000, IV  
Size 6

Serafina Lane 26MS462A01





Serafina Lane 26MS462A01

COLORS

- All Ivory
- All Black

HIGHLIGHTS

- Cartago satin
- Unembellished lace motifs on topstitch corset detail with basque waistline
- Strapless sweetheart neckline
- Kahili recycled content lining (100% recycled polyester) in All Ivory colorway
- Zipper over inner elastic closure with covered buttons trailing to hem

SIZES: 0-28

SISTER STYLES

- Also available in a ballgown silhouette (Serafina, 25MS268A01)

PERSONALIZATION OPTIONS & PRICING

26MS462A01 (Zip-up)
26MS462B01 (Lace-up)

ACCESSORIES PRICING

CH026MS4620000 (Choker)
CS026MS462000 (Cap-sleeves)
DS026MS462000 (Sleeves)
DT026MS462000 (Train)

# MAGGIE SOTTERO®



26MS480A01, DW  
Sleeves (Zorina): DS026RN417000, IV  
Size 6

Shirley 26MS480A01





26MS480A01, DW  
Size 6



26MS480A01, DW  
Size 6



26MS480A01, DW  
Veil (Hudson): VL026MS412000, IV  
Size 6

Shirley 26MS480A01

COLORS

- All Diamond White

HIGHLIGHTS

- Soft tulle
- Leviss stretch satin bodice with dropped waistline (Waterless, CO2-dyed fabric)
- Strapless soft scoop neckline
- Kahili recycled content lining (100% recycled polyester)
- Covered button over zipper and inner elastic closure
- Horsehair hem

SIZES: 0-28

PERSONALIZATION OPTIONS & PRICING

26MS480A01
------------

ACCESSORIES PRICING

VL026MS412000 (Hudson) (Fingertip veil)
DS026RN417000 (Zorina) (Sleeves)

# MAGGIE SOTTERO®



26MZ408A01, IV  
Size 18

Sinclair 26MZ408A01





26MZ408A01, IV  
Veil: VLEEEXK003000, IV  
Size 6



26MZ408A01, IV  
Cap-sleeves: CS026MZ408000, IV  
Veil: VLEEEXK003000, IV  
Size 6



26MZ408A01, IV  
Cap-sleeves: CS026MZ408000, IV  
Size 6

Sinclair 26MZ408A01

COLORS

- All Ivory

HIGHLIGHTS

- Ganavi stretch satin
- Basque waistline with top stich detail
- Cat eye neckline
- Lined with Kahili recycled content lining (100% recycled polyester)
- Zipper closure with covered buttons trailing to the hem

SIZES: 0-28

PERSONALIZATION OPTIONS & PRICING

26MZ408A01

ACCESSORIES PRICING

CS026MZ408000  
(Cap-sleeves)

VLEEEXK003000  
(Fingertip veil with blusher)

# MAGGIE SOTTERO®



FEATURING  
**JERSEY  
LINING**  
—  
LIGHTWEIGHT  
AND  
COMFORTABLE

26MK426A01, IV/IV  
Size 6

Spokane 26MK426A01



# MAGGIE SOTTERO®



## Spokane 26MK426A01

### COLORS

- All Ivory gown with Ivory Illusion

### HIGHLIGHTS

- Sherwood crepe
- Pleated front bodice accented with beaded and sequined lace
- High neck halter
- Plunging illusion beaded and sequined lace back
- Lined in Virtue stretch jersey for comfort
- Zipper closure with covered buttons trailing to the hem
- Extended illusion scalloped train with beaded and sequined lace

### SIZES: 0-28

### PERSONALIZATION OPTIONS & PRICING

26MK426A01

### ACCESSORIES PRICING

OSAEEXK007000  
(Overskirt, Plain tulle)

# MAGGIE SOTTERO®



26MS482A01, IV  
Cap-sleeves (Giselle): CS024SS830000, IV  
Size 6

Sylvana 26MS482A01





26MS482A01, IV  
Veil: VLDEEXK006000, IV  
Size 6



26MS482A01, IV  
Bodice (Lassen Marie): BDA26SS453000, IV  
Sleeves (Lassen Marie): DS026SS453000, IV  
Size 6



26MS482A01, IV  
Veil: VLDEEXK006000, IV  
Size 6

Sylvana 26MS482A01

COLORS

- All Ivory

HIGHLIGHTS

- Cartago satin
- Asymmetrically draped front bodice
- Strapless cat eye neckline
- Soft sweetheart back neckline
- Kahili recycled content lining (100% recycled polyester)
- Zipper and inner elastic closure with covered buttons trailing to the hem
- Detachable hip panniers included for customizable hip volume
- Pockets

SIZES: 0-28

PERSONALIZATION OPTIONS & PRICING

26MS482A01
------------

ACCESSORIES PRICING

CS024SS830000 (Giselle) (Cap-sleeves)
BDA26SS453000 (Lassen Marie) (Sleeveless sheer bodice)
DS026SS453000 (Lassen Marie) (Sleeves)
VLDEEXK006000 (Cathedral veil)

# MAGGIE SOTTERO®



25MB941C01, IV BLS/IV  
Size 6

Takera Leigh 25MB941C01





25MB941C01, IV BLS/IV  
Size 6



25MB941C01, IV BLS/IV  
Size 6



25MB941C01, IV BLS/IV  
Size 6

Takera Leigh 25MB941C01

COLORS

- All Ivory gown with Ivory Illusion
- Ivory over Blush gown with Ivory Illusion

HIGHLIGHTS

- Chantilly lace
- Pearl accented 3-D flowers on illusion bodice with basque waistline and exposed boning detail
- Modest square neckline
- Modest V-back
- Modest illusion Chantilly lace long sleeves with beaded 3-D flowers and detachable inner cap-sleeve linings
- Lined with Rosario crepe back satin
- Covered buttons and zipper over inner elastic closure
- Extended scalloped illusion Chantilly lace train
- Detachable inner cap-sleeves included

SIZES: 0-28

SISTER STYLES

- Also available with an illusion Chantilly lace bodice and off-the-shoulder illusion Chantilly lace long sleeves (Takera, 25MB941A01)
- Also available with an illusion Chantilly lace bodice and off-the-shoulder illusion Chantilly lace long sleeves and Tyne Mikado A-line skirt (Takera Lane, 25MB942A01)

PERSONALIZATION OPTIONS & PRICING

25MB941C01 (Modest)
------------------------

# MAGGIE SOTTERO®



FEATURING  
**JERSEY  
LINING**

LIGHTWEIGHT  
AND  
COMFORTABLE

26MB446A01, IV  
Size 6

Thera 26MB446A01





Thera 26MB446A01

COLORS

- All Ivory

HIGHLIGHTS

- Sequin lace motifs on Talin stretch crepe
- Cat eye neckline
- Lined in Toulouse stretch jersey for comfort
- Zipper and inner elastic closure with covered buttons trailing to the hem

SIZES: 0-28

PERSONALIZATION OPTIONS & PRICING

26MB446A01
------------

ACCESSORIES PRICING

CS026MB446000 (Cap-sleeves)
VL026MA446000 (Cathedral veil)

# MAGGIE SOTTERO®



26MK431A01, IV/IV  
Veil: VLEEXK005000, IV  
Size 6

Trinity 26MK431A01





## Trinity 26MK431A01

### COLORS

- All Ivory gown with Ivory Illusion
- Ivory/Silver Accent gown with Ivory Illusion

### HIGHLIGHTS

- Lyric Mikado
- Illusion beaded and sequined lace bodice with sheer organza lined sweetheart base
- Mock illusion lace turtleneck
- Illusion beaded and sequined lace back bodice
- Long fitted illusion lace sleeves with covered button closure at the wrist
- Lined with Kahili recycled content lining (100% recycled polyester)
- Zipper closure with covered buttons trailing to the hem
- Empire waist band with topstitch detail
- Pockets

### SIZES: 0-28

### PERSONALIZATION OPTIONS & PRICING

26MK431A01 (Unlined bodice)
26MK431B01 (Lined front bodice)

### ACCESSORIES PRICING

VLEEEXK005000 (Fingertip veil with blusher)
--

# MAGGIE SOTTERO®



26MK465A01, IV/IV  
Veil: VL026MK465000, IV  
Size 6

Verina 26MK465A01





Verina 26MK465A01

COLORS

- All Ivory gown with Ivory Illusion

HIGHLIGHTS

- Beaded and sequin corded lace over plain tulle
- Illusion beaded and sequined corded lace bodice
- Sweetheart neckline
- V-back
- Attached off-the-shoulder cap-sleeves with beaded and sequin corded lace motifs and inner elastic for extra mobility
- Lined with Kahili recycled content lining (100% recycled polyester)
- Covered button over zipper closure

SIZES: 0-28

PERSONALIZATION OPTIONS & PRICING

26MK465A01 (Unlined bodice, Plain tulle)
26MK465A02 (Unlined bodice, Sparkle tulle 1)
26MK465B01 (Lined front bodice, Plain tulle)
26MK465B02 (Lined front bodice, Sparkle tulle 1)

ACCESSORIES PRICING

VL026MK465000 (Cathedral veil)
-----------------------------------

# MAGGIE SOTTERO®



26MB398A01, IV  
Train: DT026MB398000, IV  
Size 6

Wyntelle 26MB398A01





Wyntelle 26MB398A01

COLORS

- All Ivory

HIGHLIGHTS

- Beaded and sequin lace motifs over glitter tulle
- Beaded and sequin lace motifs on Tyne Mikado with topstitching detail
- Cat eye neckline
- Lined in Rosario crepe back satin
- Zipper over inner elastic closure with covered buttons trailing to hem
- Mock two-piece

SIZES: 0-28

PERSONALIZATION OPTIONS & PRICING

26MB398A01

ACCESSORIES PRICING

DT026MB398000  
(Train)

# MAGGIE SOTTERO®



26MN420A01, IV  
Size 18

Yuma 26MN420A01





Yuma 26MN420A01

COLORS

- All Ivory

HIGHLIGHTS

- Felicity Mikado
- Basque waistline with boning detail
- Felicity Mikado draped cowl neckline
- Lined with Kahili recycled content lining (100% recycled polyester)
- Zipper closure with covered buttons trailing to the hem
- Pockets

SIZES: 0-28

PERSONALIZATION OPTIONS & PRICING

26MN420A01
------------

ACCESSORIES PRICING

CS026MN420000 (Cap-sleeves)
VL026MA420000 (Cathedral veil)



Gowns available for quick weddings! For your convenience, Quick Ship stickers are available to place on your samples to identify gowns available in the Quick Ship program! Ask your Sales Representative for more details or download and print our quick ship delivery tags located on the Retailer Portal.



ANNISTON\*  
23MS040A01



ANNISTON\*  
23MS040A03



BENJIE\*  
25MB271A01



BENJIE ROYALE\*  
25MB841A01, 25MB841A02



CASEY\*  
22MC926A01



DERRICK\*  
23MS723A01



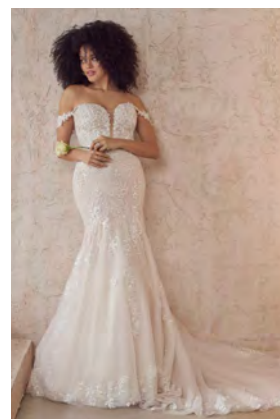
FORTUNE\*  
24MS775A01 (corset closure)  
24MS775B01 (zipper closure)



HARLEM\*  
22MT513A01



JACE  
25MS339A01



LENNON  
22MC913A01



MAUREEN  
25MS873A01



MELISSA\*  
22MS890A01



NATALIE  
25MB924A01



SERAFINA\*  
25MS268A01



TAKERA  
25MB941A01

\*Ideal for CURVY brides

NOTE: Personalizations and Special lengths do not apply. Effective July 1, 2025. Extended deliveries may apply during Chinese holidays.





Gowns available for quick weddings! For your convenience, Quick Ship stickers are available to place on your samples to identify gowns available in the Quick Ship program! Ask your Sales Representative for more details or download and print our quick ship delivery tags located on the Retailer Portal.



TINA\*  
25MS261A01



YARA  
25MK263A01



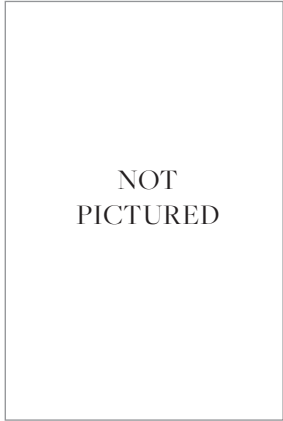
ZINAIDA\*  
24MC206A01

\*Ideal for CURVY brides

NOTE: Personalizations and Special lengths do not apply. Effective July 1, 2025. Extended deliveries may apply during Chinese holidays.



Gowns available for quick weddings! For your convenience, Quick Ship stickers are available to place on your samples to identify gowns available in the Quick Ship program! Ask your Sales Representative for more details or download and print our quick ship delivery tags located on the Retailer Portal.



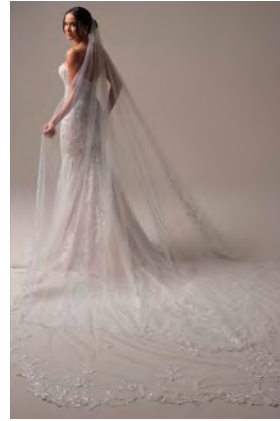
ANNISTON  
CAP-SLEEVES  
YYCSC+23MS040000



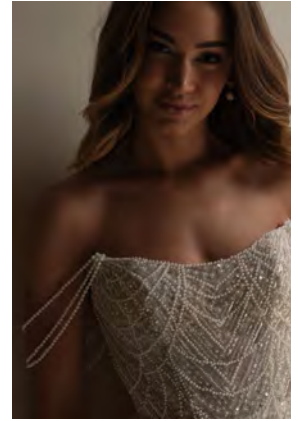
ANNISTON  
CAP-SLEEVES  
YYCSA+23MS040000



BENJIE  
CAP-SLEEVES  
YYCS0+25MB271000



BENJIE ROYALE VEIL  
YYVL0+25MB841000



CONSTANCE  
CAP-SLEEVES  
YYCS0+25SS348000



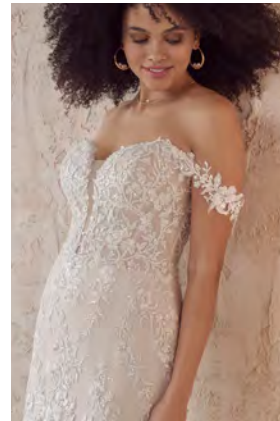
DERRICK  
CAP-SLEEVES  
YYCS0+23MS723000



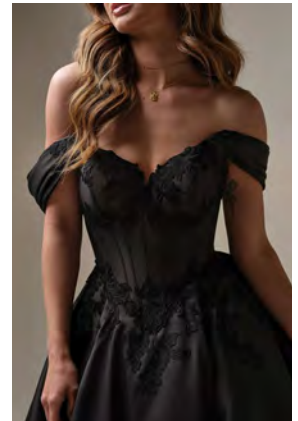
GISELLE  
CAP-SLEEVES  
YYCS0+24SS830000



HALLE VEIL  
YYVL0\_25SS934000



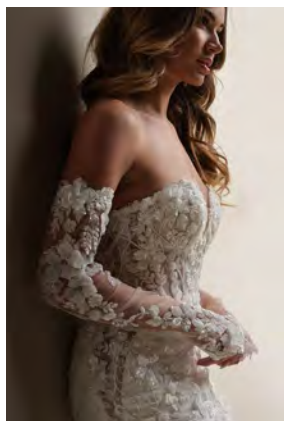
LENNON CAP-SLEEVES  
YYCS0+22MC913000



SERAFINA  
CAP-SLEEVES  
YYCS0+25MS268000



TAKERA VEIL  
YYVL0+25MB941000



TWILIGHT SLEEVES  
YYDS0+25SS330000



# We stand for *Love*, and Love for *ALL*

We celebrate every beautiful love story,  
no matter a bride's identity, style,  
accessibility needs, body type, wedding  
vision, budget or timeline.



## Body Positivity & Inclusivity

We design styles that create a perfect fit  
for every bride so they can feel like the best  
version of themselves...

- Built-in corsetry
- Figure smoothing shapewear
- Bodysuits and jersey lining
- Larger boning
- Lined bodices
- Larger bust-cups
- Raised front and back necklines
- US sizes 0-28 (Use our special request program to order sizes above 28)
- Multiple strap length and width options
- Diversity in silhouettes and fabrications
- Various shades of nude bra cups and illusion tulle

We stand for *Love*,  
& Love for *ALL*,  
including Mother Earth

**107,342 TREES PLANTED  
AND COUNTING...**



PROUD SUPPORTER OF  
**ONETREEPLANTED**







## Creating a Positive *Impact* by *Reducing* the Environmental Footprint of Our Product

---

- With the addition of Spring 2026 styles, Maggie will feature an estimated 184 lower-impact gowns in our collections, made with recycled-content fabrics and yarn-dyed materials.
- Recycled-content fabrics (like our Veler Chiffon and Kahili lining) lower greenhouse gas emissions by reducing energy and resource requirements compared to producing new, virgin polyester.
- Yarn-dyed fabrics (like our Elin Mikado) consume less water and energy use in production.



- This season will introduce the first of our gowns made with waterless CO2-dyed fabrics into our collections. This innovative technology will further reduce the water and energy consumption of our materials. Water shortages are expected to continue impacting the textile industry; by proactively adopting these fabrics to our collections we're supporting greater supply chain resiliency.
- Plus: In 2025 we're again targeting a 100% diversion of excess stock from landfills & incinerators across our global warehouses through SuperCircle, Avena Group and donation partners like Brides Across America.
- Stores can recycle any inventory (regardless of condition or brand) at Maggie's discounted rate with SuperCircle.



# Swatches for Purchase

- Sold as 8.5" x 11" packets of all available colorways
- Will contain a hanger loop to leverage on dress
- The following key styles are available

## The Following Key Styles are Available:

- |                   |                   |                 |
|-------------------|-------------------|-----------------|
| • ABERDEEN        | • DERRICK MARIE   | • MITCHELL VIDA |
| • <b>ALVAREZ*</b> | • ELIZABETH       | • PARIS         |
| • ANNISTON        | • ELIZABETH MARIE | • PERSEPHONE    |
| • ASPEN           | • EMMANUELLE      | • RADIANCE      |
| • ASPEN MARIE     | • FARO            | • SELENA VIDA   |
| • AUBRIELLE       | • FORTUNE MARIE   | • SERAFINA      |
| • AUBRIELLE MARIE | • LAGOS           | • TENILLE       |
| • AYAN            | • LANDRI          | • VINEYARD      |
| • <b>BLOSSOM*</b> | • LENNON          | • ZAYN          |
| • CONSTANCE       | • MIRABELLA       | • ZEPHYRINE     |
| • CRESSIDA        | • MIRABELLA MARIE | • ZINAIDA MARIE |
| • CYPRUS          |                   |                 |

**\*New Spring 2026 Styles added**





## PRIMED FOR SUCCESS

Check Out Some  
of Our *Resources*

### Marketing Magic:

- MARKETING E-BLAST
- MARKETING 101
- PERSONALIZED MARKETING STRATEGY
- 20 MINUTE MARKETING ROUTINE STEP BY STEP

### Stylist Superstars:

- STYLIST SUCCESS ACADEMY PAGE
- STYLIST E-BLAST
- ALL THINGS, PRODUCT
- STYLIST INCENTIVES
- STYLIST TRAINING LIBRARY
- DIVERSITY, INCLUSION, & SUSTAINABILITY TRAINING

### Bridal Boutique Brilliance:

- CUSTOMER SUCCESS RESOURCE PAGE (PASSWORD: MAGGIEMAGIC)
- ELEMENTS OF A 5-STAR BOUTIQUE
- PARTNERSHIP PATH PROGRAM
- INVENTORY MASTERY
- DIVERSITY, INCLUSION, & SUSTAINABILITY

### Catch Maggie Updates:

- MAGGIE SOTTERO'S RETAILER FACEBOOK GROUP
- MAGGIE SOTTERO RETAILER PORTAL
- WEEKLY MAGGIE E-BLAST

FOR ANY QUESTIONS OR HELP NAVIGATING  
PRIMED FOR SUCCESS, PLEASE REACH OUT TO  
[CUSTOMER.SUCCESS@MAGGIESOTTERO.COM](mailto:CUSTOMER.SUCCESS@MAGGIESOTTERO.COM).

