



Rebecca Ingram™  
Spring 2022







Alexis 22RK521A  
Alexis Lynette 22RK521B

Rebecca Ingram™



see the  
VIDEO!

ALEXIS LYNETTE VIDEO

personalize it!  
FOR YOUR LOVE STORY



Rebecca Ingram  
THIS GOWN IS MADE WITH LUXE  
**JERSEY LINING**  
Designed for a comfortable fit that is ultra-lightweight



ALEXIS LYNETTE



# Alexis 22RK521A

Rebecca Ingram

## COLORS

- All Ivory gown with Ivory Illusion
- Ivory gown with Natural Illusion (pictured)

## HIGHLIGHTS

- Beaded embroidery over Odessa chiffon
- Illusion bodice accented with beaded embroidery
- Deep V-neckline
- Scoop back
- Beaded spaghetti straps
- Lined with Vlada stretch jersey for comfort
- Zipper closure with covered buttons trailing down the train
- Illusion beaded embroidery cut-out scalloped train

## SIZES

0-28

personalize it!

## PERSONALIZATION OPTIONS

- Extend the train for added drama (up to 10 in/25 cm)

## MISCELLANEOUS

- Photographed with light nude bra cups, dark nude available separately



# Alexis Lynette 22RK521B

## COLORS

- All Ivory gown with Ivory Illusion (pictured)
- Ivory gown with Natural Illusion

## HIGHLIGHTS

- Beaded embroidery over Odessa chiffon
- Lined bodice accented with beaded embroidery
- Deep V-neckline
- Scoop back
- Beaded spaghetti straps
- Lined with Vlada stretch jersey for comfort
- Zipper closure with covered buttons trailing down the train
- Illusion beaded embroidery cut-out scalloped train

## SIZES

0-28

personalize it!

## PERSONALIZATION OPTIONS

- Extend the train for added drama (up to 10 in/25 cm)



ALEXIS LYNETTE

ALEXIS LYNETTE



Aretha 22RK577

Rebecca Ingram™



see the VIDEO!

personalize it!  
FOR YOUR LOVE STORY





# Aretha 22RK577

Rebecca Ingram

## COLORS

- All Ivory gown with Ivory Illusion
- Ivory over Blush gown with Natural Illusion
- Ivory/Silver Accent over Blush gown with Natural Illusion (pictured)

## HIGHLIGHTS

- Sequin lace over sparkle tulle
- Deep illusion sweetheart neckline
- Covered buttons over zipper closure
- Horsehair hem finish

## SIZES

0-28

*personalize it!*

## PERSONALIZATION OPTIONS

- Extend the train for added drama (up to 15 in/38 cm), opt to shorten the train (up to 15 in/38 cm) or remove the train for a more casual look
- Add buttons down the back for a vintage vibe

## ACCESSORIES

- Detachable off-the-shoulder ruched sparkle tulle cap sleeves sold separately (CS022RK577000)





Bellarose 22RK595

Rebecca Ingram™



see the VIDEO!

personalize it!  
FOR YOUR LOVE STORY



Rebecca Ingram  
THIS GOWN IS MADE WITH LUXE  
**JERSEY LINING**  
Designed for a  
comfortable fit that is  
ultra-lightweight





# Bellarose 22RK595

Rebecca Ingram

## COLORS

- Ivory gown with Natural Illusion (pictured)

## HIGHLIGHTS

- Panama crepe
- Beaded embroidery illusion straps
- Beaded embroidery cut outs on side bodice
- Lined with Vlada stretch jersey for comfort
- Halter neckline
- Covered buttons over zipper closure
- Beaded embroidery with deep keyhole back detail
- Illusion lace cut-out train accented with beaded embroidery

## SIZES

0-28

*personalize it!*

## PERSONALIZATION OPTIONS

- Extend the train for added drama (up to 12 in/30 cm), opt to shorten the train (up to 10 in/25 cm) or remove the train for a more casual look
- Add buttons down the back for a vintage vibe





Calista 22RK588A  
Calista Lynette 22RK588B

Rebecca Ingram™

personalize it!  
FOR YOUR LOVE STORY





# Calista 22RK588A

## COLORS

- All Ivory gown with Ivory Illusion
- Ivory gown with Natural Illusion (pictured)

## HIGHLIGHTS

- Panama crepe
- Sequined lace motifs over illusion sparkle texture tulle bodice
- Illusion V-neckline accented with lace trim
- Illusion V-back
- Illusion lace tank straps
- Lined in Vlada stretch jersey for comfort
- Covered buttons over zipper closure

## SIZES

0-28

*personalize it!*

## PERSONALIZATION OPTIONS

- Extend the train for added drama (up to 15 in/38 cm), opt to shorten the train (up to 10 in/25 cm) or remove the train for a more casual look
- Add buttons down the back for a vintage vibe

## MISCELLANEOUS

- Photographed with light nude bra cups, dark nude available separately

# Calista Lynette 22RK588B

## COLORS

- All Ivory gown with Ivory Illusion (pictured)
- Ivory gown with Natural Illusion

## HIGHLIGHTS

- Panama crepe
- Sequined lace motifs
- V-neckline accented with lace trim
- Illusion V-back
- Illusion lace tank straps
- Lined in Vlada stretch jersey for comfort
- Covered buttons over zipper closure

## SIZES

0-28

*personalize it!*

## PERSONALIZATION OPTIONS

- Extend the train for added drama (up to 15 in/38 cm), opt to shorten the train (up to 10 in/25 cm) or remove the train for a more casual look
- Add buttons down the back for a vintage vibe

*Rebecca Ingram*





Dahlia 22RT538A  
Dahlia Lynette 22RT538B

Rebecca Ingram™

personalize it!  
FOR YOUR LOVE STORY





# Dahlia 22RT538A

## COLORS

- All Ivory gown with Ivory illusion
- Ivory over Blush gown with Natural Illusion
- Ivory over Stone gown with Natural Illusion (pictured)

## HIGHLIGHTS

- Lace motifs over tulle
- Sheer organza lined lace bodice
- Deep V-neckline edged with beaded trim
- Illusion lace V-back
- Beaded spaghetti straps
- Covered buttons over zipper closure
- Beaded belt attached
- Illusion tulle side insets

## SIZES

0-28

*personalize it!*

## PERSONALIZATION OPTIONS

- Opt to shorten the train (up to 16 in/41 cm) or remove the train for a more casual look
- Add buttons down the back for a vintage vibe

## MISCELLANEOUS

- Extra lace motif included for minor neckline alterations
- Photographed with light nude bra cups, dark nude available separately

# Dahlia Lynette 22RT538B

(NOT PHOTOGRAPHED)

## COLORS

- All Ivory gown with Ivory illusion
- Ivory over Blush gown with Natural Illusion
- Ivory over Stone gown with Natural Illusion

## HIGHLIGHTS

- Lace motifs over tulle
- Deep V-neckline edged with beaded trim
- Illusion lace V-back
- Beaded spaghetti straps
- Covered buttons over zipper closure
- Beaded belt attached
- Illusion tulle side insets

## SIZES

0-28

*personalize it!*

## PERSONALIZATION OPTIONS

- Opt to shorten the train (up to 16 in/41 cm) or remove the train for a more casual look
- Add buttons down the back for a vintage vibe

## MISCELLANEOUS

- Extra lace motif included for minor neckline alterations

*Rebecca Ingram*





Emerald 22RW568

Rebecca Ingram™

▶ see the VIDEO!

personalize it!  
FOR YOUR LOVE STORY





# Emerald 22RW568

Rebecca Ingram

## COLORS

- Ivory gown with Natural Illusion (pictured)

## HIGHLIGHTS

- Talin stretch crepe
- Soft square neckline
- Illusion lace back with subtle sequins finished with chiffon tie
- Lined with Brisa stretch jersey for comfort
- Zipper closure with covered buttons trailing down the train

## SIZES

0-24

*personalize it!*

## PERSONALIZATION OPTIONS

- Extend the train for added drama (up to 5 in/13 cm), opt to shorten the train (up to 12 in/30 cm) or remove the train for a more casual look





Evora 22RN541A  
Evora Lynette 22RN541B

Rebecca Ingram™

personalize it!  
FOR YOUR LOVE STORY





# Evora 22RN541A

## COLORS

- All Ivory gown with Ivory Illusion
- Ivory over Pearl gown with Natural Illusion
- Ivory over Vintage Blush gown with Natural Illusion (pictured)

## HIGHLIGHTS

- Lace motifs over tulle
- Plunging illusion V-neckline
- Beaded spaghetti straps
- Crystal button over zipper closure

## SIZES

0-28

*personalize it!*

## PERSONALIZATION OPTIONS

- Extend the train for added drama (up to 18 in/46 cm), opt to shorten the train (up to 26 in/66 cm) or remove the train for a more casual look
- Add crystal buttons down the back for a vintage vibe

## ACCESSORIES

- Chapel veil adorned with lace motifs sold separately \*Veil measures 108 inches (274 cm) (VL022RN541000)

## MISCELLANEOUS

- Extra lace motif included for minor neckline alterations

# Evora Lynette 22RN541B

(NOT PHOTOGRAPHED)

## COLORS

- All Ivory gown with Ivory Illusion
- Ivory over Pearl gown with Natural Illusion
- Ivory over Vintage Blush gown with Natural Illusion

## HIGHLIGHTS

- Lace motifs over tulle
- V-neckline
- Beaded spaghetti straps
- Crystal button over zipper closure

## SIZES

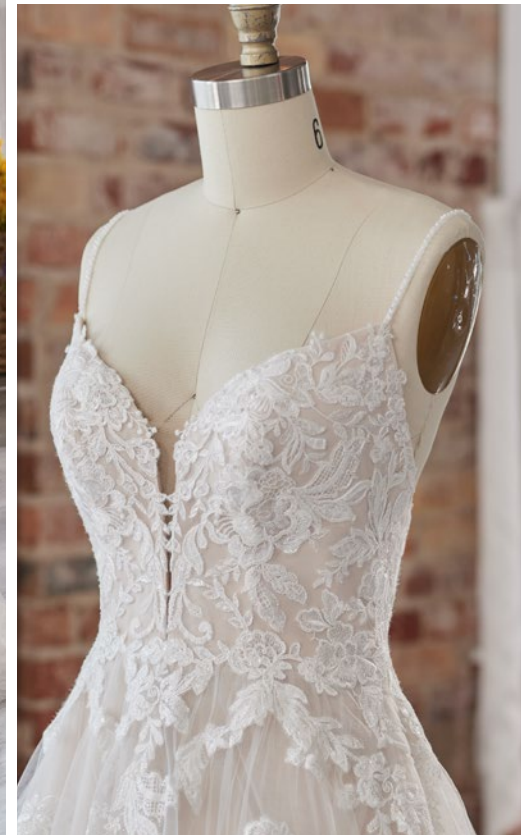
0-28

*personalize it!*

## PERSONALIZATION OPTIONS

- Extend the train for added drama (up to 18 in/46 cm), opt to shorten the train (up to 26 in/66 cm) or remove the train for a more casual look
- Add crystal buttons down the back for a vintage vibe

*Rebecca Ingram*





Fleur 22RK540A  
Fleur Lynette 22RK540B

Rebecca Ingram™

personalize it!  
FOR YOUR LOVE STORY



Rebecca Ingram  
THIS GOWN IS MADE WITH LUXE  
**JERSEY LINING**  
Designed for a  
comfortable fit that is  
ultra-lightweight





# Fleur 22RK540A

Rebecca Ingram

## COLORS

- All Ivory gown with Ivory Illusion (pictured)

## HIGHLIGHTS

- Sherwood crepe
- Beaded embroidery over illusion tulle bodice
- Deep illusion V-neckline
- Deep illusion V-back
- Beaded embroidery cap sleeves
- Lined with Vlada stretch jersey for comfort
- Zipper closure with covered buttons trailing down the train

## SIZES

0-28

personalize it!

## PERSONALIZATION OPTIONS

- Extend the train for added drama (up to 15 in/38 cm), opt to shorten the train (up to 15 in/38 cm) or remove the train for a more casual look

## ACCESSORIES

- Detachable long illusion lace fitted sleeves sold separately (DSA22RK540000)
- Detachable long illusion lace bell sleeves sold separately (DSB22RK540000)

## MISCELLANEOUS

- Photographed with light nude bra cups, dark nude available separately

# Fleur Lynette 22RK540B

(NOT PHOTOGRAPHED)

## COLORS

- All Ivory gown with Ivory Illusion

## HIGHLIGHTS

- Sherwood crepe
- Lined bodice with beaded embroidery
- V-neckline
- Deep illusion V-back
- Beaded embroidery cap sleeves
- Lined with Virtue stretch jersey for comfort
- Zipper closure with covered buttons trailing down the train

## SIZES

0-28

personalize it!

## PERSONALIZATION OPTIONS

- Extend the train for added drama (up to 15 in/38 cm), opt to shorten the train (up to 15 in/38 cm) or remove the train for a more casual look





Hattie Lane 22RT517A  
Hattie Lane Lynette 22RT517B

Rebecca Ingram™



see the  
**VIDEO!**

personalize it!  
FOR YOUR LOVE STORY



HATTIE LANE LYNETTE





# Hattie Lane 22RT517A

Rebecca Ingram

## COLORS

- All Ivory gown with Ivory Illusion
- Antique Ivory gown with Natural Illusion
- Ivory over Blush gown with Natural Illusion (pictured)
- Ivory over Misty Mauve gown with Natural Illusion
- Ivory over Mocha gown with Natural Illusion

## HIGHLIGHTS

- Floral lace motifs over glitter tulle
- Covered buttons over zipper closure with inner elastic neckline
- Plunging illusion sweetheart neckline

## SIZES

0-28

personalize it!

## PERSONALIZATION OPTIONS

- Extend the train for added drama (up to 15 in/38 cm), opt to shorten the train (up to 17 in/43 cm) or remove the train for a more casual look
- Add buttons down the back for a vintage vibe

## ACCESSORIES

- Tulle cap sleeves with floral lace motifs sold separately (CS022RT517000, Hattie)

## MISCELLANEOUS

- Extra lace motif included for minor neckline alterations



# Hattie Lane Lynette 22RT517B

## COLORS

- All Ivory
- Antique Ivory
- Ivory over Blush (pictured)
- Ivory over Misty Mauve
- Ivory over Mocha

## HIGHLIGHTS

- Floral lace motifs over glitter tulle
- Covered buttons over zipper closure with inner elastic
- Sweetheart neckline

## SIZES

0-28

personalize it!

## PERSONALIZATION OPTIONS

- Extend the train for added drama (up to 15 in/38 cm), opt to shorten the train (up to 17 in/43 cm) or remove the train for a more casual look
- Add buttons down the back for a vintage vibe





Hazel 22RC522A  
Hazel Lynette 22RC522B

Rebecca Ingram™

personalize it!  
FOR YOUR LOVE STORY





## Hazel 22RC522A

### COLORS

- Ivory gown with Natural Illusion (pictured)
- Ivory over Blush gown with Natural Illusion (pictured)
- Ivory over Mocha gown with Natural Illusion

### HIGHLIGHTS

- Sequin lace motifs over Chantilly lace
- Plunging illusion halter neckline
- Illusion plunging keyhole back
- Covered buttons over zipper closure
- Illusion lace train

### SIZES

0-28

*personalize it!*

### PERSONALIZATION OPTIONS

- Extend the train for added drama (up to 10 in/25 cm), opt to shorten the train (up to 10 in/25 cm)
- Add buttons down the back for a vintage vibe

### MISCELLANEOUS

- Extra lace motif included for minor neckline alterations

## Hazel Lynette 22RC522B

(NOT PHOTOGRAPHED)

### COLORS

- Ivory gown with Natural Illusion
- Ivory over Blush gown with Natural Illusion
- Ivory over Mocha gown with Natural Illusion

### HIGHLIGHTS

- Sequin lace motifs over Chantilly lace
- Halter neckline
- Illusion plunging keyhole back
- Covered buttons over zipper closure
- Illusion lace train

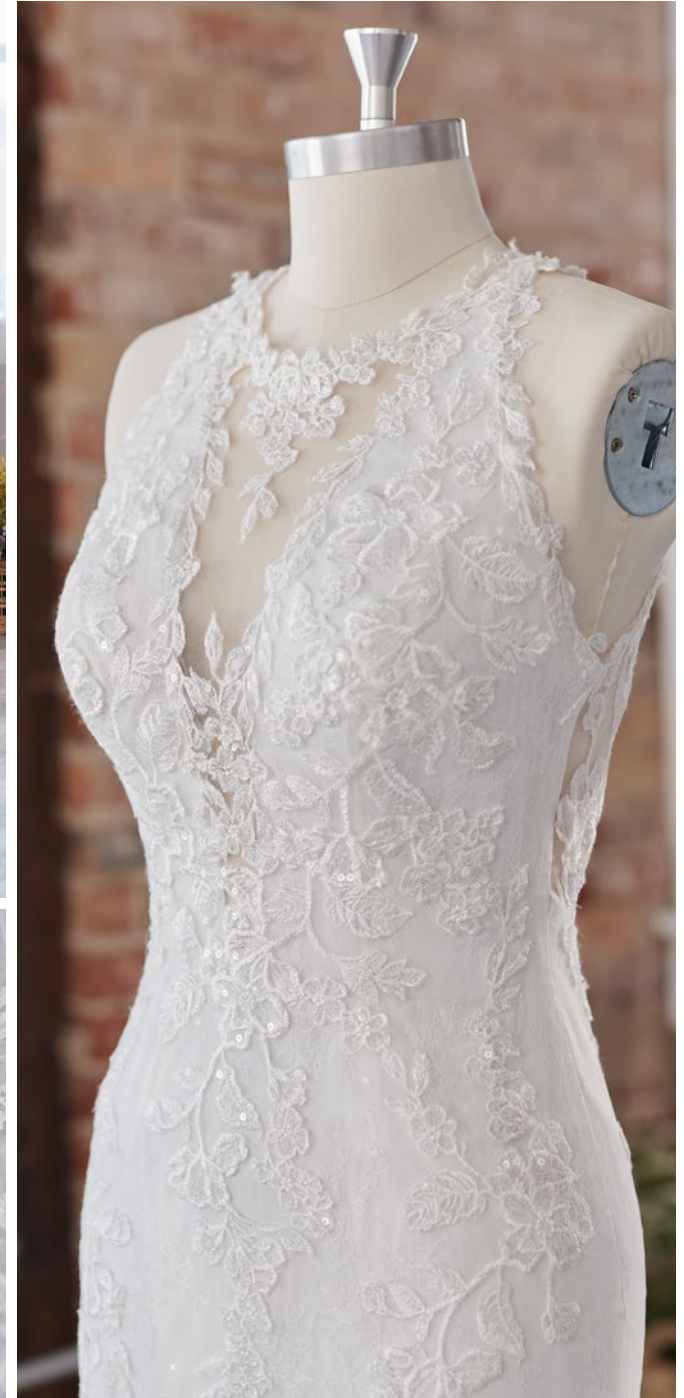
### SIZES

0-28

*personalize it!*

### PERSONALIZATION OPTIONS

- Extend the train for added drama (up to 10 in/25 cm), opt to shorten the train (up to 10 in/25 cm)
- Add buttons down the back for a vintage vibe





Iona 22RS591

Rebecca Ingram™

 see the VIDEO!

personalize it!  
FOR YOUR LOVE STORY 





# Iona 22RS591

Rebecca Ingram

## COLORS

- All Ivory (pictured)

## HIGHLIGHTS

- Elodie Mikado with lace motifs accented with sequins
- Deep V-neckline
- Soft scoop back
- Elodie Mikado spaghetti straps
- Covered buttons over zipper closure
- Pockets

## SIZES

0-28

*personalize it!*

## PERSONALIZATION OPTIONS

- Extend the train for added drama (up to 10 in/25 cm), opt to shorten the train (up to 25 in/63 cm) or remove the train for a more casual look
- Add buttons down the back for a vintage vibe





Jennings 22RW587

Rebecca Ingram™



see the VIDEO!

personalize it!  
FOR YOUR LOVE STORY



A

A





# Jennings 22RW587

Rebecca Ingram

## COLORS

- All Ivory (pictured)

## HIGHLIGHTS

- Blanca stretch chiffon
- Strapless scoop neckline
- Lined with Brisa stretch jersey for comfort
- Zipper closure with covered buttons trailing down the train

## SIZES

0-28

*personalize it!*

## PERSONALIZATION OPTIONS

- Extend the train for added drama (up to 10 in/25 cm), opt to shorten the train (up to 26 in/66 cm) or remove the train for a more casual look

## ACCESSORIES

- Blanca stretch chiffon off-the-shoulder cap sleeves with detachable long sleeves sold separately (DS022RW587000)





Kavita 22RT589A  
Kavita Lynette 22RT589B

Rebecca Ingram™



see the  
VIDEO!

personalize it!  
FOR YOUR LOVE STORY



KAVITA LYNETTE



KAVITA LYNETTE



Rebecca Ingram  
THIS GOWN IS MADE WITH LUXE  
**JERSEY LINING**  
Designed for a  
comfortable fit that is  
ultra-lightweight



# Kavita 22RT589A

Rebecca Ingram

## COLORS

- All Ivory gown with Ivory Illusion
- Ivory over Pearl gown with Natural Illusion
- Ivory over Blush gown with Natural Illusion (pictured)

## HIGHLIGHTS

- Lace motifs with sequins over Chantilly lace
- Illusion lace bodice with exposed boning
- Scoop neckline
- Illusion lace tank straps
- Lined with Lorena stretch jersey for comfort
- Covered buttons over zipper closure
- Extended illusion train with scattered lace motifs

## SIZES

0-28

personalize it!

## PERSONALIZATION OPTIONS

- Extend the train for added drama (up to 12 in/30 cm), opt to shorten the train (up to 20 in/51 cm) or remove the train for a more casual look
- Add buttons down the back for a vintage vibe

## MISCELLANEOUS

- Photographed with light nude bra cups, dark nude available separately



# Kavita Lynette 22RT589B

## COLORS

- All Ivory gown with Ivory Illusion
- Ivory over Pearl gown with Natural Illusion (pictured)
- Ivory over Blush gown with Natural Illusion

## HIGHLIGHTS

- Lace motifs with sequins over Chantilly lace
- Illusion lace bodice with exposed boning
- Scoop neckline
- Lined with Lorena stretch jersey for comfort
- Covered buttons over zipper closure
- Extended illusion train with scattered lace motifs

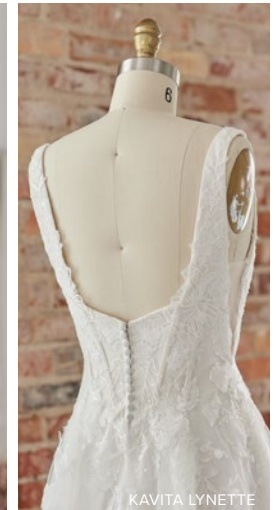
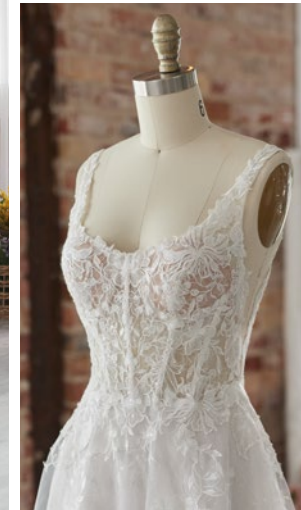
## SIZES

0-28

personalize it!

## PERSONALIZATION OPTIONS

- Extend the train for added drama (up to 12 in/30 cm), opt to shorten the train (up to 20 in/51 cm) or remove the train for a more casual look
- Add buttons down the back for a vintage vibe





Kayla 22RZ543

Rebecca Ingram™



see the VIDEO!

personalize it!  
FOR YOUR LOVE STORY





# Kayla 22RZ543

Rebecca Ingram

## COLORS

- All Ivory (pictured)

## HIGHLIGHTS

- Kosma crepe
- Off-the-shoulder portrait neckline
- Off-the-shoulder cap sleeves
- Zipper with inner elastic closure with covered buttons trailing down the train
- Thigh-high slit
- Detachable Kosma crepe spaghetti straps included

## SIZES

0-28

*personalize it!*

## PERSONALIZATION OPTIONS

- Extend the train for added drama (up to 36 in/91 cm), opt to shorten the train (up to 28 in/71 cm) or remove the train for a more casual look





Larkin 22RW590A  
Larkin Lynette 22RW590B

Rebecca Ingram™



LARKIN LYNETTE VIDEO

personalize it!  
FOR YOUR LOVE STORY



LARKIN LYNETTE



Rebecca Ingram  
THIS GOWN IS MADE WITH LUXE  
**JERSEY LINING**  
Designed for a  
comfortable fit that is  
ultra-lightweight



# Larkin 22RW590A

## COLORS

- All Ivory gown with Ivory Illusion
- Ivory over Soft Blush gown with Natural Illusion
- Ivory over Soft Nude gown with Natural Illusion (pictured)

## HIGHLIGHTS

- Lace motifs with sequins over Chantilly lace
- Illusion lace bodice
- V-neckline edged with trim
- Deep illusion V-back
- Lace trim straps
- Lined with Virtue stretch jersey for comfort
- Covered buttons over zipper closure
- Illusion scallop lace train

## SIZES

0-28

*personalize it!*

## PERSONALIZATION OPTIONS

- Extend the train for added drama (up to 10 in/25 cm), opt to shorten the train (up to 26 in/66 cm) or remove the train for a more casual look
- Add buttons down the back for a vintage vibe

## MISCELLANEOUS

- Photographed with light nude bra cups, dark nude available separately



LARKIN LYNETTE



LARKIN LYNETTE



# Larkin Lynette 22RW590B

## COLORS

- All Ivory gown with Ivory Illusion
- Ivory over Soft Blush gown with Natural Illusion (pictured)
- Ivory over Soft Nude gown with Natural Illusion

## HIGHLIGHTS

- Lace motifs with sequins over Chantilly lace
- Lined lace bodice with illusion side cutouts
- V-neckline edged with trim
- Deep illusion V-back
- Lace trim straps
- Lined with Virtue stretch jersey for comfort
- Covered buttons over zipper closure
- Illusion scallop lace train

## SIZES

0-28

*personalize it!*

## PERSONALIZATION OPTIONS

- Extend the train for added drama (up to 10 in/25 cm), opt to shorten the train (up to 26 in/66 cm) or remove the train for a more casual look
- Add buttons down the back for a vintage vibe



LARKIN LYNETTE





Marta 22RS501A  
Marta Lynette 22RS501B

Rebecca Ingram™

personalize it!  
FOR YOUR LOVE STORY





# Marta 22RS501A

## COLORS

- Ivory gown with Natural Illusion (pictured)

## HIGHLIGHTS

- Aurora chiffon
- Beaded lace bodice lined with organza
- Deep V-neckline
- Soft V-back
- Beaded spaghetti straps
- Covered buttons over zipper closure
- Beaded belt attached
- Thigh-high slit

## SIZES

0-28

*personalize it!*

## PERSONALIZATION OPTIONS

- Extend the train for added drama (up to 12 in/30 cm), opt to shorten the train (up to 19 in/48 cm) or remove the train for a more casual look
- Add buttons down the back for a vintage vibe

## MISCELLANEOUS

- Photographed with light nude bra cups, dark nude available separately

# Marta Lynette 22RS501B

(NOT PHOTOGRAPHED)

## COLORS

- All Ivory

## HIGHLIGHTS

- Aurora chiffon
- Beaded lace bodice
- Deep V-neckline
- Soft V-back
- Beaded spaghetti straps
- Covered buttons over zipper closure
- Beaded belt attached
- Thigh-high slit

## SIZES

0-28

*personalize it!*

## PERSONALIZATION OPTIONS

- Extend the train for added drama (up to 12 in/30 cm), opt to shorten the train (up to 19 in/48 cm) or remove the train for a more casual look
- Add buttons down the back for a vintage vibe

*Rebecca Ingram*





# Murphy 22RZ593

(AMAURI SKIRT, 22MW010)  
(ASHBY JACKET, 22MW564)  
(TEMPE SKIRT, 22MW011)

# Rebecca Ingram™

personalize it!  
FOR YOUR LOVE STORY





# Murphy 22RZ593

## COLORS

- All Ivory (pictured)

## HIGHLIGHTS

- Ganavi stretch Mikado
- Deep V-neckline
- V-back
- Ganavi stretch Mikado spaghetti straps
- Lined in Brisa stretch jersey for comfort
- Zipper closure

## SIZES

0-28

*personalize it!*

## PERSONALIZATION OPTIONS

- Opt to shorten the train (up to 16 in/40 cm) or remove the train for a more casual look

# Amauri 22MW010 (SKIRT)

Detachable sparkle tulle over skirt with romance satin waistband lined with Chic organza sold separately (Amauri, DT022MW01000)

- All Ivory (pictured)
- 0-28
- PERSONALIZATION OPTION: Opt to shorten the train (up to 8 in/20 cm)

# Ashby 22MW564 (JACKET)

Floor length tulle jacket embellished with lace sold separately (Ashby, JKA22MW564000)

- All Ivory jacket with Ivory Illusion (pictured)
- 0-28
- PERSONALIZATION OPTION: Extend the train for added drama (up to 10 in/25 cm), opt to shorten the train (up to 10 in/25 cm)

Unembellished floor length tulle jacket sold separately (Ashby, JKB22MW564000)

- All Ivory jacket with Ivory Illusion
- 0-28
- PERSONALIZATION OPTION: Extend the train for added drama (up to 10 in/25 cm), opt to shorten the train (up to 10 in/25 cm)

# Tempe 22MW011 (SKIRT)

Detachable tulle over skirt with lux satin waistband lined with Chic organza sold separately (Tempe, DT022MW011000)

- All Diamond White, All Ivory (pictured)
- 0-28
- PERSONALIZATION OPTION: Extend the train for added drama (up to 8 in/20 cm), opt to shorten the train (up to 8 in/20 cm)

*Rebecca Ingram*





Nakara 22RC573

Rebecca Ingram™

personalize it!  
FOR YOUR LOVE STORY





# Nakara 22RC573

Rebecca Ingram

## COLORS

- All Ivory gown with Ivory Illusion
- Ivory over Vintage Mauve gown with Natural Illusion (pictured)

## HIGHLIGHTS

- Lace motifs over soft tulle netting accented with 3-D flowers and sequins
- Sheer organza lined bodice
- Deep V-neckline
- Deep V-back
- Rolled tulle spaghetti straps
- Covered buttons over zipper closure
- Illusion tulle side insets

## SIZES

0-28

*personalize it!*

## PERSONALIZATION OPTIONS

- Extend the train for added drama (up to 8 in/20 cm), opt to shorten the train (up to 8 in/20 cm) or remove the train for a more casual look
- Add buttons down the back for a vintage vibe

## ACCESSORIES

- Soft fingertip two tier tulle veil with 3-D lace motifs sold separately \*Veil measures 46 inches (117 cm) (VL022RC573000)

## MISCELLANEOUS

- Photographed with light nude bra cups, dark nude available separately





Pippa 22RC527A  
Pippa Lynette 22RC527B  
(RUMI JACKET, 22MC524)

Rebecca Ingram™

see the  
**VIDEO!**

personalize it!  
FOR YOUR LOVE STORY





## Pippa 22RC527A

### COLORS

- Ivory gown with Natural Illusion (pictured)

### HIGHLIGHTS

- Keela Mikado
- Plunging illusion sweetheart neckline
- Zipper closure with covered buttons trailing down the train
- Detachable belt included

### SIZES

0-28

personalize it!

### PERSONALIZATION OPTIONS

- Extend the train for added drama (up to 8 in/20 cm), opt to shorten the train (up to 12 in/30 cm) or remove the train for a more casual look

### ACCESSORIES

- Detachable long puff sleeves with Keela Mikado cuffs sold separately (DS022RC527000)
- Detachable Keela Mikado train sold separately (DT022RC527000)
  - PERSONALIZATION OPTION: Opt to shorten the train (up to 8 in/20 cm)



## Pippa Lynette 22RC527B

### COLORS

- All Ivory (pictured)

### HIGHLIGHTS

- Keela Mikado
- Strapless sweetheart neckline
- Zipper closure with covered buttons trailing down the train
- Detachable belt included

### SIZES

0-28

personalize it!

### PERSONALIZATION OPTIONS

- Extend the train for added drama (up to 8 in/20 cm), opt to shorten the train (up to 12 in/30 cm) or remove the train for a more casual look

## Rumi 22MC524 (JACKET)

- Illusion beaded lace V-neck jacket with long illusion lace bishop sleeves sold separately (Rumi, JK022MC524000)
- Ivory jacket with Ivory Illusion (pictured)
- Size 0-28



PIPPA LYNETTE



Priscilla Leigh 22RC599

Rebecca Ingram™



see the  
**VIDEO!**

personalize it!  
FOR YOUR LOVE STORY



Rebecca Ingram  
THIS GOWN IS MADE WITH LUXE  
**JERSEY LINING**  
Designed for a  
comfortable fit that is  
ultra-lightweight





# Priscilla Leigh 22RC599

Rebecca Ingram

## COLORS

- All Ivory
- Ivory over Soft Nude (pictured)
- Ivory over Misty Mauve (pictured)

## HIGHLIGHTS

- Lace motifs over tulle
- Lined with Virtue stretch jersey for comfort
- Beaded lace bodice embellished with Swarovski crystals accented with beaded trims
- Covered buttons over zipper closure
- Horsehair hem finish
- Modest scoop neckline
- Modest tulle flutter sleeves edged with beading

## SIZES

0-28

*personalize it!*

## PERSONALIZATION OPTIONS

- Extend the train for added drama (up to 12 in/30 cm), opt to shorten the train (up to 12 in/30 cm) or remove the train for a more casual look
- Add buttons down the back for a vintage vibe

## SISTER STYLES

- Available as a V-neck style with tank straps (Priscilla, 20RC646)





Rosemary Leigh 22RW597

Rebecca Ingram™

personalize it!  
FOR YOUR LOVE STORY



Rebecca Ingram  
THIS GOWN IS MADE WITH LUXE  
**JERSEY LINING**  
Designed for a comfortable fit that is ultra-lightweight



# Rosemary Leigh 22RW597

Rebecca Ingram

## COLORS

- All Ivory (pictured)

## HIGHLIGHTS

- Talin stretch crepe over ruffle tulle skirt
- Modest scoop neckline
- Modest scoop back
- Long fitted sleeves with illusion trim at the wrist finished with covered buttons
- Lined with Brisa stretch jersey for comfort
- Covered buttons over zipper closure
- Tiered tulle skirt with horsehair and lace trim

## SIZES

0-28

personalize it!

## PERSONALIZATION OPTIONS

- Extend the train for added drama (up to 10 in/25 cm), opt to shorten the train (up to 10 in/25 cm) or remove the train for a more casual look

## ACCESSORIES

- Fingertip tulle veil edged with lace trim \*Veil measures 46 in (117 cm) (Rosemary, VLA21RW379000)
- Cathedral length tulle veil edged with lace trim \*Veil measures 120 in (305 cm) (Rosemary, VLB21RW379000)

## SISTER STYLES

- Available sleeveless with a low scoop back (Rosemary, 21RW379A01)





Sadie 22RK511A  
Sadie Lynette 22RK511B

Rebecca Ingram™

personalize it!  
FOR YOUR LOVE STORY



Rebecca Ingram  
THIS GOWN IS MADE WITH LUXE  
**JERSEY LINING**  
Designed for a  
comfortable fit that is  
ultra-lightweight





# Sadie 22RK511A

## COLORS

- All Ivory gown with Ivory Illusion
- Ivory gown with Natural Illusion (pictured)

## HIGHLIGHTS

- Sherwood crepe
- Illusion beaded lace bodice
- Square neckline
- Deep illusion scoop back
- Illusion lace tank straps
- Lined with Vlada stretch jersey for comfort
- Zipper closure with covered buttons trailing down the train
- Illusion lace train

## SIZES

0-28

personalize it!

## PERSONALIZATION OPTIONS

- Extend the train for added drama (up to 15 in/38 cm), opt to shorten the train (up to 28 in/71 cm) or remove the train for a more casual look

## ACCESSORIES

- Detachable long fitted sleeves sold separately (DS022RK511000)

## MISCELLANEOUS

- Photographed with light nude bra cups, dark nude available separately



# Sadie Lynette 22RK511B

## COLORS

- All Ivory gown with Ivory Illusion (pictured)

## HIGHLIGHTS

- Sherwood crepe
- Beaded lace bodice
- Square neckline
- Deep illusion V-back
- Illusion lace tank straps
- Lined with Vlada stretch jersey for comfort
- Zipper closure with covered buttons trailing down the train
- Illusion lace train

## SIZES

0-28

personalize it!

## PERSONALIZATION OPTIONS

- Extend the train for added drama (up to 15 in/38 cm), opt to shorten the train (up to 28 in/71 cm) or remove the train for a more casual look





Shauna 22RK526

Rebecca Ingram™



see the VIDEO!

personalize it!  
FOR YOUR LOVE STORY





# Shauna 22RK526

Rebecca Ingram

## COLORS

- Ivory gown with Natural Illusion
- Ivory over Soft Blush gown with Natural Illusion (pictured)
- Ivory over Nude gown with Natural Illusion (pictured)

## HIGHLIGHTS

- Sequined lace motifs over texture tulle
- Illusion tulle bodice
- Deep V-neckline
- Soft V-back
- Illusion lace tank straps
- Covered buttons over zipper closure

## SIZES

0-28

personalize it!

## PERSONALIZATION OPTIONS

- Extend the train for added drama (up to 20 in/51 cm), opt to shorten the train (up to 15 in/38 cm) or remove the train for a more casual look
- Add buttons down the back for a vintage vibe

## MISCELLANEOUS

- Extra lace motif included for minor neckline alterations
- Photographed with light nude bra cups, dark nude available separately





Theodora 22RK525  
(LANA JACKET, 22MK575)

Rebecca Ingram™



personalize it!  
FOR YOUR LOVE STORY



Rebecca Ingram  
THIS GOWN IS MADE WITH LUXE  
**JERSEY LINING**  
Designed for a  
comfortable fit that is  
ultra-lightweight



\*SHOWN WITH LANA JACKET



# Theodora 22RK525

Rebecca Ingram

## COLORS

- Ivory gown with Natural Illusion (pictured)

## HIGHLIGHTS

- Sherwood crepe
- Deep illusion V-neckline
- Soft deep V-back
- Tank straps
- Lined in Vlada stretch jersey for comfort
- Zipper closure with covered buttons trailing down the train
- Sherwood crepe waistband attached
- Illusion tulle side insets

## SIZES

0-28

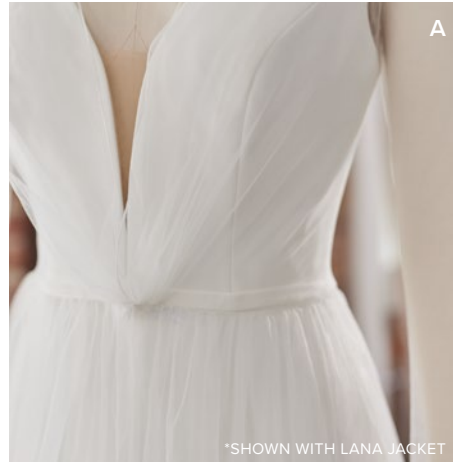
personalize it!

## PERSONALIZATION OPTIONS

- Extend the train for added drama (up to 15 in/38 cm), opt to shorten the train (up to 15 in/38 cm) or remove the train for a more casual look

## Lana 22MK575 (JACKET)

- Unembellished floor length tulle jacket with fitted sleeves sold separately (Lana, JK022MK575000)
- All Ivory (pictured)
- 0-28
- PERSONALIZATION OPTION: Extend the train for added drama (up to 15 in/38 cm), opt to shorten the train (up to 15 in/38 cm)





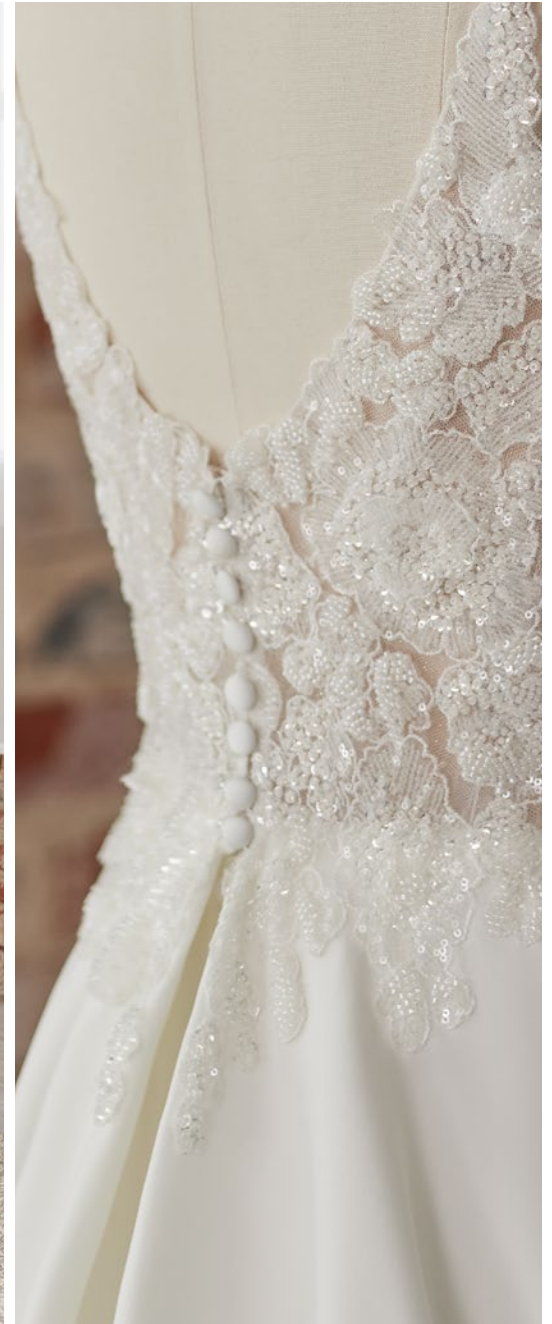
Tilda 22RW532A  
Tilda Lynette 22RW532B

Rebecca Ingram™



see the  
VIDEO!

personalize it!  
FOR YOUR LOVE STORY





# Tilda 22RW532A

## COLORS

- Ivory gown with Natural Illusion (pictured)

## HIGHLIGHTS

- Opulent stretch satin
- Sheer beaded lace bodice lined with organza
- Deep illusion V-neckline
- V-back
- Beaded spaghetti straps
- Lined with Donella crepe
- Zipper closure with covered buttons trailing down the train
- Thigh-high slit
- Pockets

## SIZES

0-28

*personalize it!*

## PERSONALIZATION OPTIONS

- Extend the train for added drama (up to 5 in/12 cm), opt to shorten the train (up to 25 in/63 cm) or remove the train for a more casual look

## MISCELLANEOUS

- Extra lace fabric included for minor neckline alterations
- Photographed with light nude bra cups, dark nude available separately

# Tilda Lynette 22RW532B

(NOT PHOTOGRAPHED)

## COLORS

- Ivory gown with Natural Illusion

## HIGHLIGHTS

- Opulent stretch satin
- Beaded lace bodice
- Deep illusion V-neckline
- V-back
- Beaded spaghetti straps
- Lined with Donella crepe
- Zipper closure with covered buttons trailing down the train
- Thigh-high slit
- Pockets

## SIZES

0-28

*personalize it!*

## PERSONALIZATION OPTIONS

- Extend the train for added drama (up to 5 in/12 cm), opt to shorten the train (up to 25 in/63 cm) or remove the train for a more casual look

## MISCELLANEOUS

- Extra lace fabric included for minor neckline alterations

*Rebecca Ingram*





Winnie 22RS531

Rebecca Ingram™



see the VIDEO!

personalize it!  
FOR YOUR LOVE STORY





# Winnie 22RS531

Rebecca Ingram

## COLORS

- All Ivory gown with Ivory Illusion
- Ivory over Blush gown with Natural Illusion (pictured)

## HIGHLIGHTS

- Lace motifs over soft tulle netting
- Chic organza sweetheart base
- Asymmetrical illusion tulle neckline
- Beaded spaghetti straps finish asymmetrical neckline
- Detachable bow at shoulder
- Covered buttons over zipper closure

## SIZES

0-28

*personalize it!*

## PERSONALIZATION OPTIONS

- Extend the train for added drama (up to 18 in/45 cm), opt to shorten the train (up to 29 in/73 cm) or remove the train for a more casual look
- Add buttons down the back for a vintage vibe

## MISCELLANEOUS

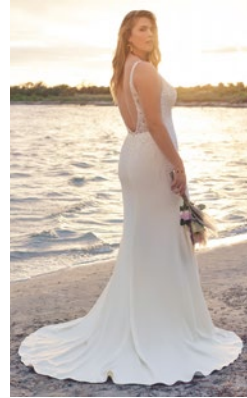
- Photographed with light nude bra cups, dark nude available separately





# SISTER STYLES AND NEW PERSONALIZATION OPTIONS

Rebecca Ingram



**Carmen Lynette 20RT702A02**  
Lined bodice



**Hattie Lynette 20RT702B01/20RT702D01**  
Raised front neckline & zipper closure/  
raised front neckline & corset closure



**Hattie Lynette Marie 20RT702D02**  
Raised front neckline & corset closure



**Lorraine Dawn 22RS586A01**  
Long sleeves







## Lorraine Leigh 22RS586C01

Modest



see the  
**VIDEO!**

## Additional Styles

### Hattie 20RT702C01

Corset closure (new personalization available)

### Hattie Marie

20RT702A02/20RT702C02

Plain tulle & zipper closure/  
Plain tulle & corset closure

### Hattie Lynette

20RT702B01/20RT702D01

Raised front neckline, glitter tulle & zipper closure/  
Raised front neckline, glitter tulle & corset closure

### Hattie Lynette Marie

20RT702B02/20RT702D02

Raised front neckline, plain tulle & zipper closure/  
Raised front neckline, plain tulle & corset closure

### Lorraine Dawn Lynette 22RS586A01

Lined bodice & long sleeves